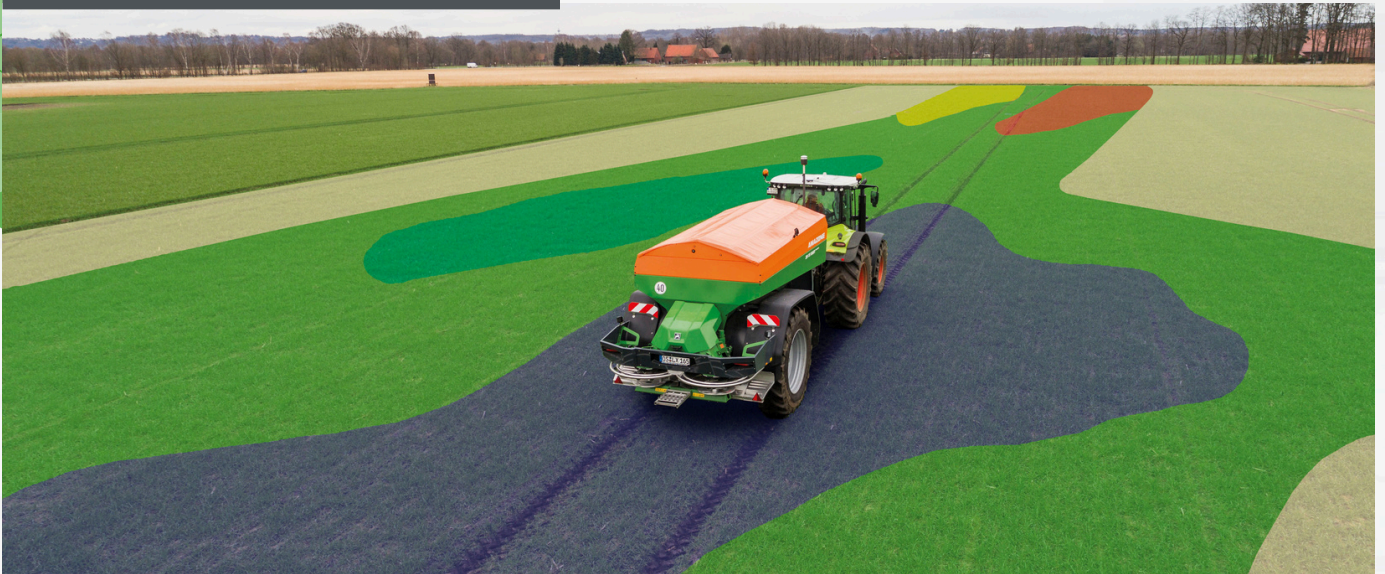


User Guide

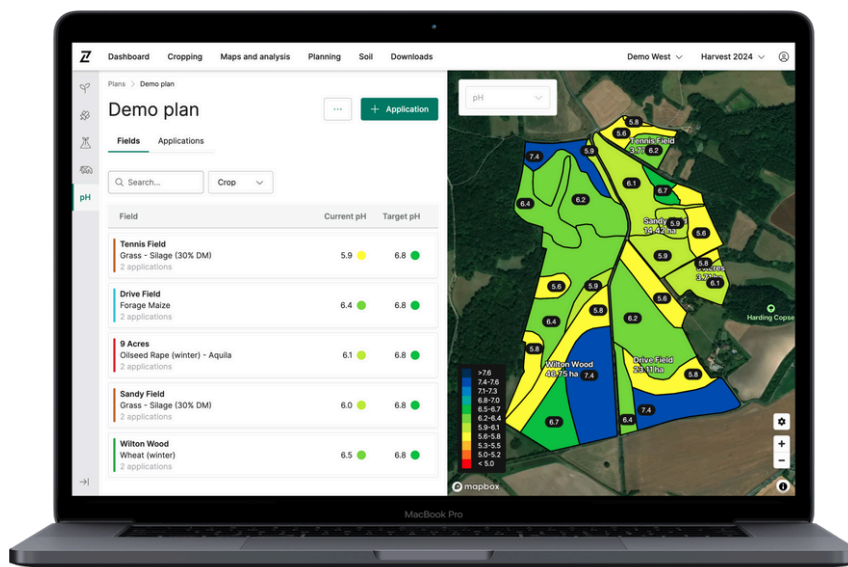


CONTOUR RELEASE

LIME PLANNER

INTRODUCTION

Lime planning is a simple, easy to use tool for calculating lime requirements and planning lime applications. The tool is designed to work for both flat rate and variable rate planning, producing job sheet reports and variable rate application files for machinery controllers.

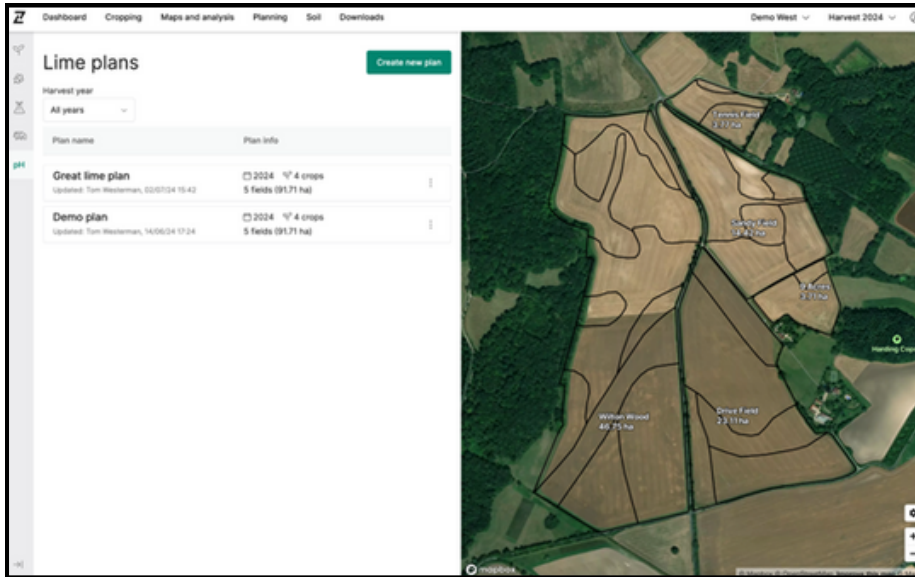


LIME PLANNER

USER GUIDE

HOMEPAGE

The lime planning homepage is the central area for accessing and managing all lime plans, and is accessed through the Planning tab and pH icon in Contour.



APPLYING FILTERS

The filters located in the top right-hand menu select specific farm and harvest year[Sf1] , and only plans for the selected farm will be displayed. All lime plans created across all harvest years for the selected farm will be displayed in the plan list. Plans can be filtered by harvest year using the filter at the top of the plan list. When creating a plan, the harvest year will be based on the year selected in the top-right hand menu.

PLAN MANAGEMENT

From the homepage, you have all the tools necessary to effectively manage your plans. This includes creating new plans, editing existing ones, deleting plans, or downloading job sheet reports and VRA files.

VIEWING A PLAN

To view a nutrient plan, click on its name from the Lime planning homepage, or to edit it, select the three dots to the right hand side of the plan name box.



LIME PLANNER



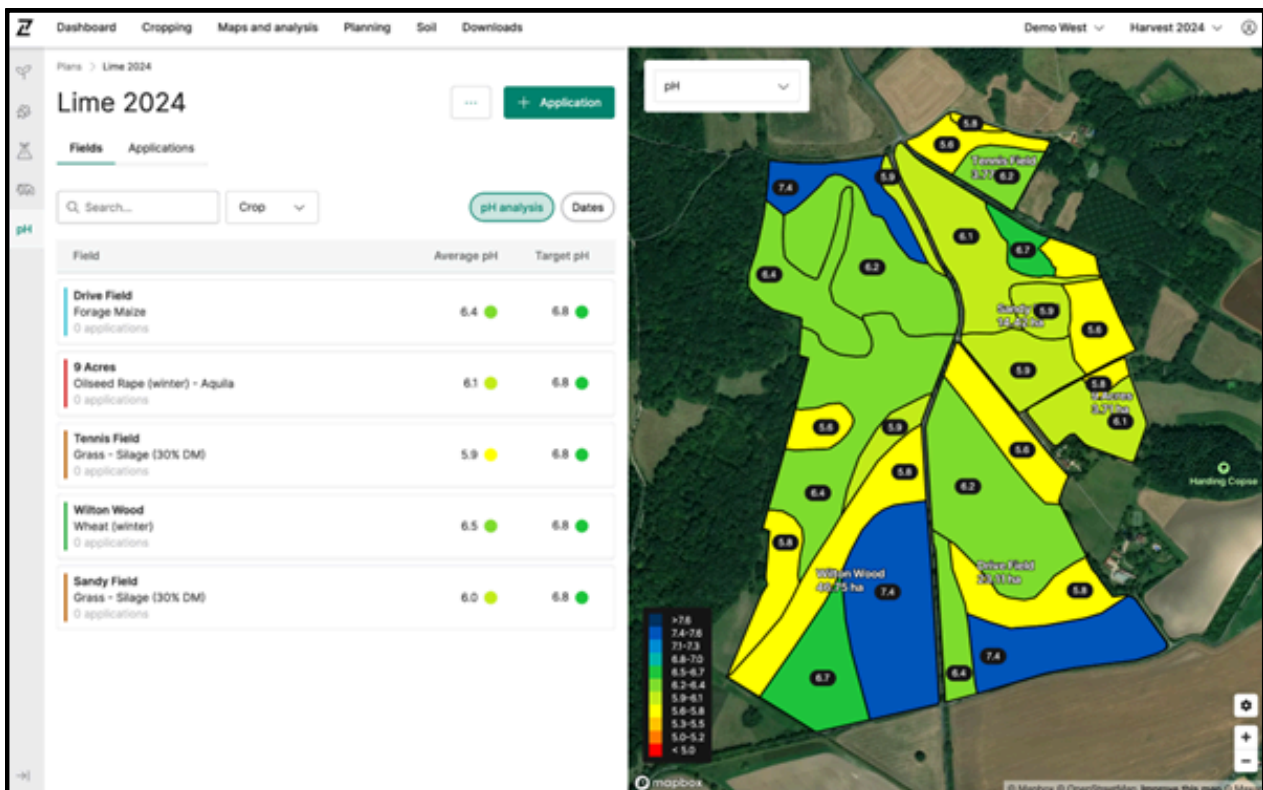
USER GUIDE

PLAN FIELDS

The Plan Fields page displays all the fields in the lime plan, both in a list and map view.

Wholefield average pH and target pH values are displayed in the field list, with zone pH values displayed on the map labels. Soil analysis dates can be viewed in the list by selecting the "Dates" chip above the field list, or on the map by selecting the drop down in the top left of the map.

Cropping and number of applications are displayed in the field list to inform users of whether any lime has been planned on each field.



PLAN APPLICATIONS

The Plan Applications page displays all the planned applications in the lime plan, and their cumulative product totals.

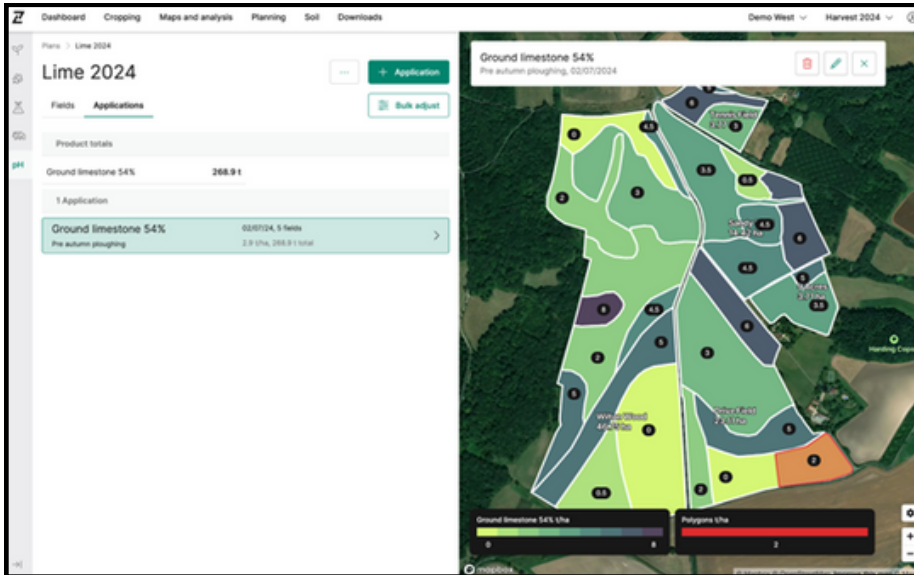
Selecting an application updates the map to show application rates, and zooming in will display these on a map label.



LIME PLANNER

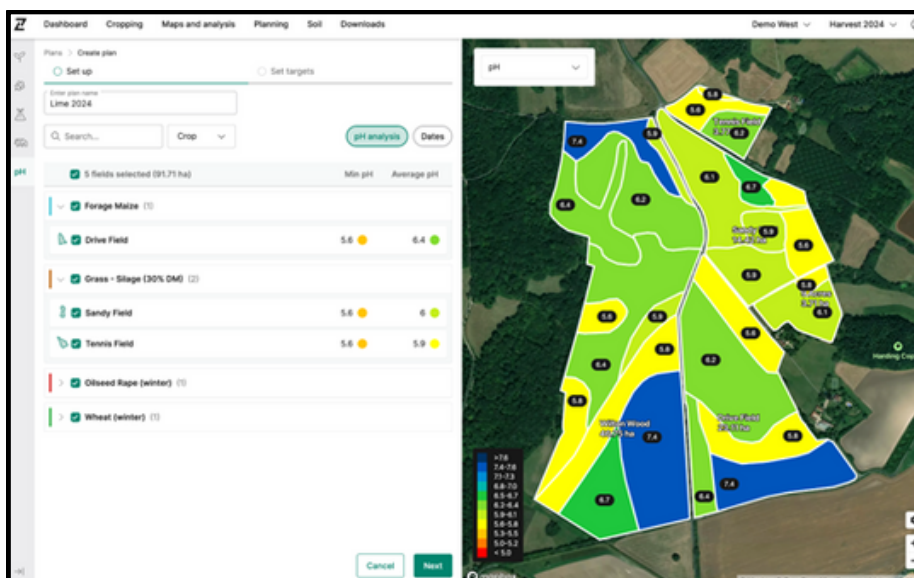
USER GUIDE

Selecting an application updates the map to show application rates, and zooming in will display these on a map label.



CREATING A PLAN

To start, click 'Create new plan' on the Lime planning homepage, give your plan a name and select the fields you want to include. Crops can be expanded to display the fields within each crop type.



www.rhizadigital.co.uk



CONTACT:

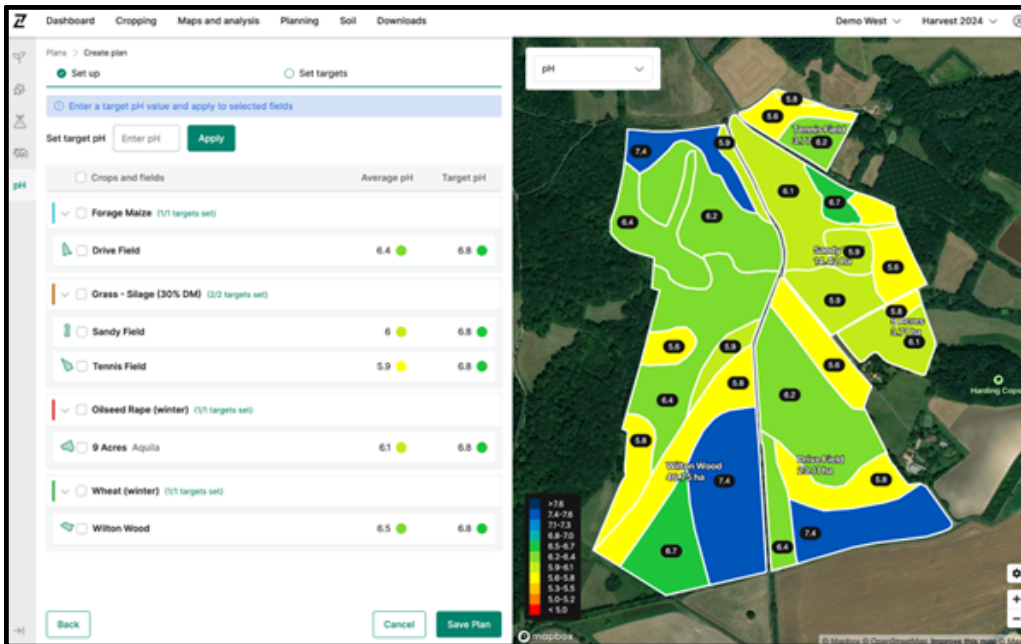
Ben Foster
Product Manager
ben.foster@rhizadigital.co.uk

LIME PLANNER

USER GUIDE

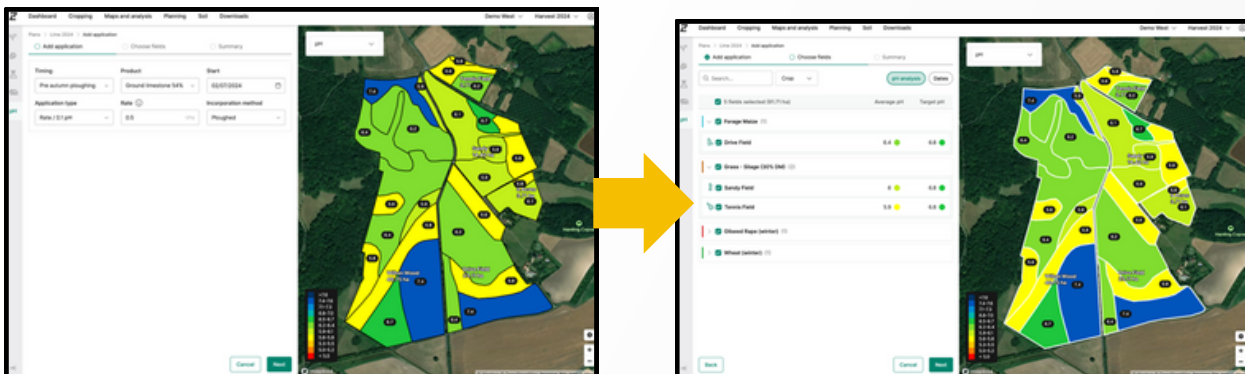
SET TARGET pH

To set target pH values for fields, enter a pH value and select fields from the list, and then select apply. You can set target pH values for individual fields to suit crop and soil type requirements.



ADDING APPLICATIONS

The Add applications flow is an easy three step process for adding lime applications to your lime plan. First, enter the desired timing, product, start date, application type, rate, and method for the application. There are default timings and application methods available, however a custom product must be created to add a lime application. You can also create custom products and application methods if desired.



CONTACT:

www.rhizadigital.co.uk



Ben Foster
Product Manager
ben.foster@rhizadigital.co.uk

LIME PLANNER

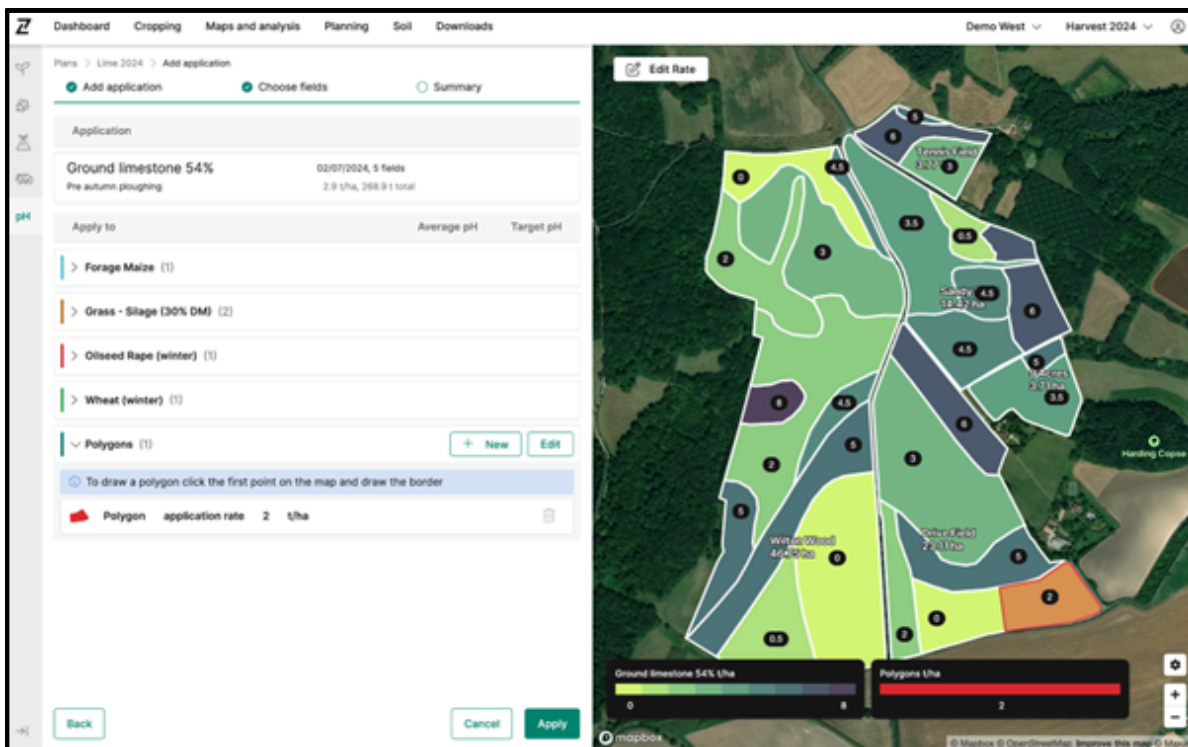


USER GUIDE

Next, choose the fields that you'd like to add the application to. The crops can be expanded to show the fields within each crop type. The field list can be filtered by name, crop and variety.

Finally, review the application summary and make any final tweaks to the application. Rates for individual zones can be updated using the Edit Rate button in the top left of the map. Polygons with application rates can be added by selecting the + New button in the Polygons area.

Select apply to add the application to the selected fields. This will update the Plan Applications page with the new application.



VIEWING, UPDATING AND DELETING APPLICATIONS

Selecting an application on the Plan Applications page displays its rate map, and is also where you can update or delete it.

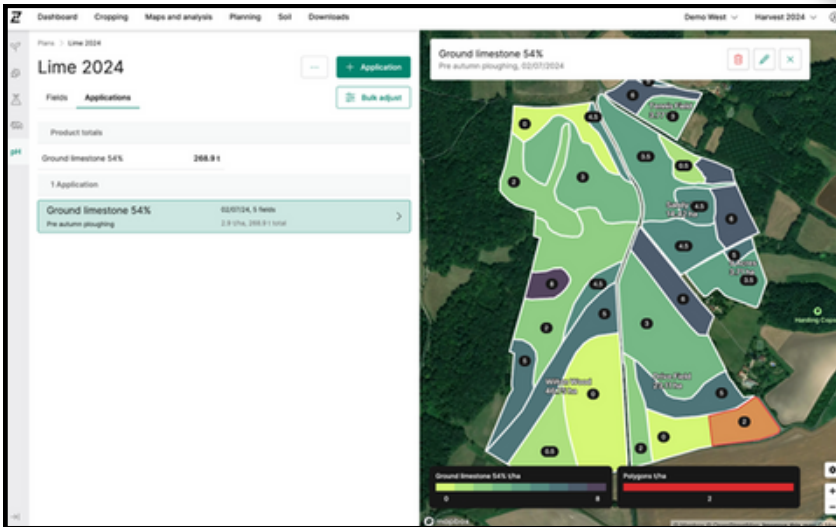
When updating applications, fields can be added and removed without affecting the existing application rates and polygons. Updating the product or rate for an application will recalculate all application rates (meaning any previous bulk adjustments, updates to individual zone application rates and and polygon rates will be lost).



LIME PLANNER



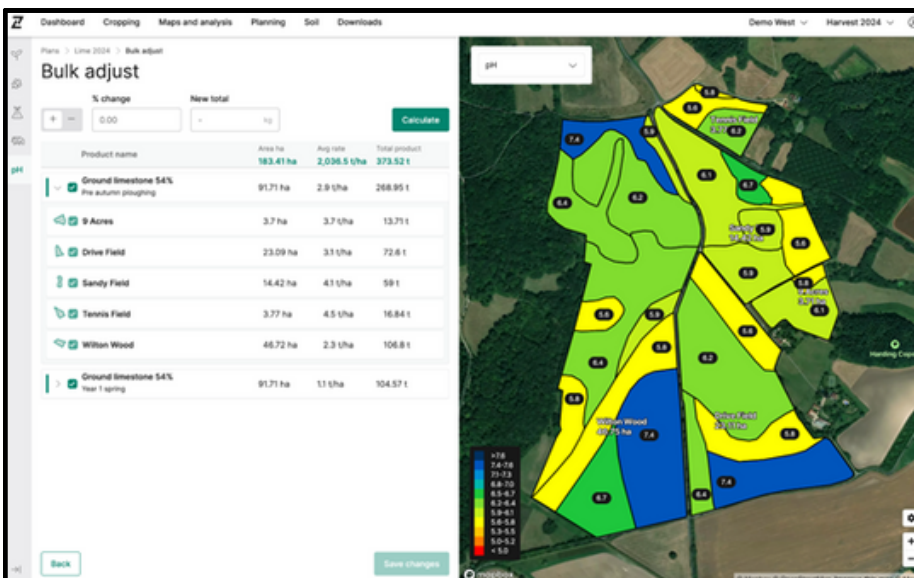
USER GUIDE



MAKING BULK ADJUSTMENTS

Bulk adjustments enable you to update application rates by product, application or field, using either a percentage change or a desired product total. In either case, all application rates will be adjusted by the same proportion.

To make a bulk adjustment, from the Plan Applications select the Bulk adjust button. Select the application(s) or fields you want to bulk adjust, enter a percentage change or product total and select Calculate. If you wish, make further bulk adjustments to products, applications or fields. Select Save changes to save the bulk adjustments and return to the Plan Applications page.



CONTACT:

www.rhizadigital.co.uk



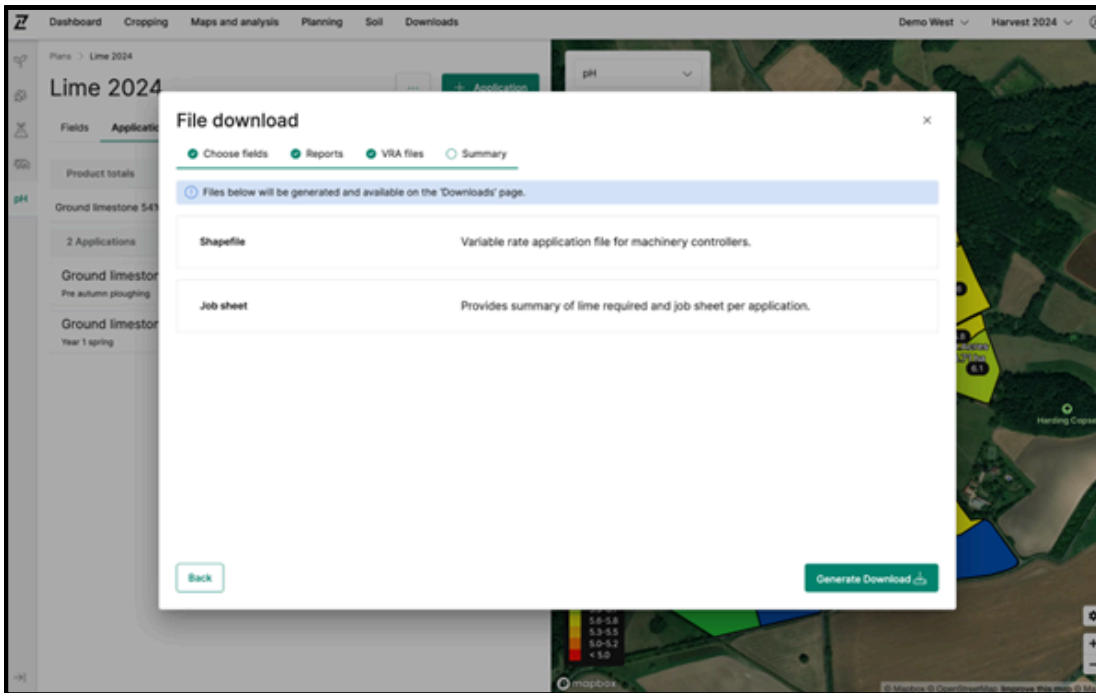
Ben Foster
Product Manager
ben.foster@rhizadigital.co.uk

LIME PLANNER

USER GUIDE

FILE DOWNLOADS

File downloads for lime planning include job sheet reports (with or without maps) and VRA files. From the Lime planning homepage or Lime Applications page, select the three dots and Downloads. Select your desired files using the download wizard. Once generated, files can be accessed from the Downloads page (via the top navigation panel).



JOB SHEET REPORTS

The job sheet report provides a summary of applications inside the lime plan, with overall product totals and field product totals grouped by application (product & timing). Reports can be generated with or without application maps. Applied dates and product totals of applications can be recorded on the job sheet by operators for easy record keeping when back in the office. Job sheet report downloads are disabled until at least one application has been created.

VARIABLE RATE APPLICATION (VRA) FILES

Variable rate application (VRA) files in shapefile format can be downloaded for your lime plan. VRA file downloads are ordered into folders based on applications (product & application timing). Shapefile downloads can be generated as a field per file, or multiple fields per file.

